



# model PBM1047

Bottom Plate

## FEATURES & BENEFITS

### CONSTRUCTION

Barrier-free designed fountain for child or adult ADA access. Made of air-entrained concrete with exposed aggregate finish and galvanized wire. Air entrainment ensures strength and freeze-thaw durability. Unit has a stainless steel basin, and hood extension to protect the bubbler head with a partial enclosure. Vandal-resistant bottom plate, and chrome-plated 1-1/2" (3.81 cm) IPS trap.

### DRAIN CLEAN-OUT

Top-down access to the drain allows the fountain to be cleaned without taking the unit apart, good for outdoor settings with drain-clogging sediment such as leaves, garbage, and other debris.

### VALVE

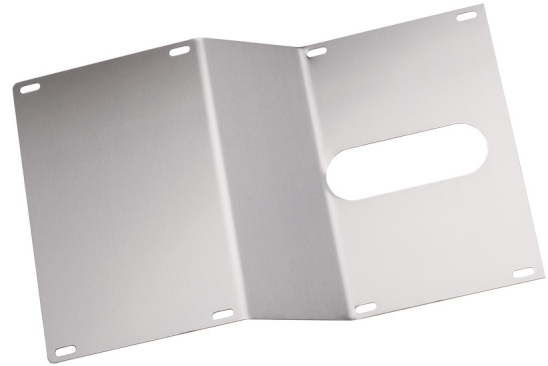
Valve is designed so full continuous flow occurs with the simple squeeze of a lever providing an easy start to the irrigation process.

### MOUNTING

3/16" (.47 cm) steel mounting plate with supplied mounting hardware for a solid unit base allows for easy installation to a framed wall.

### BUBBLER HEAD

Polished chrome-plated brass bubbler head with integral basin shank for added strength. Shielded, angled stream opening provides a steady, sanitary source of drinking water.



## SPECIFICATIONS

Model PBM1047 is a bottom access plate for a concrete arm fountain.

## APPLICATIONS

## OPTIONS

To see all options for this model, visit [www.hawesco.com](http://www.hawesco.com)

